

Sixteenth International Conference

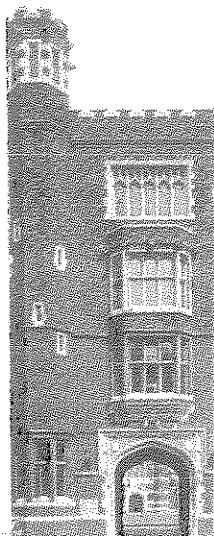


Selwyn

College

Cambridge





The sixteenth International Union Conference will be held from Saturday evening 4th August to Saturday morning 11th August, 1984, at Selwyn College, Grange Road, Cambridge.

The College is in the west of Cambridge, about 15 minutes gentle stroll from the city centre. Although founded in the late 19th century, Selwyn is built on the lines of the older colleges, around a grass quadrangle on which only Fellows of the College may walk.

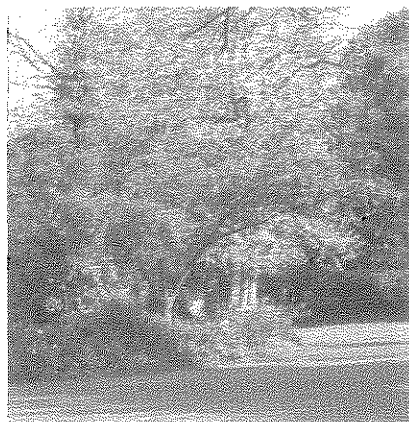
It has a wood panelled chapel, a lofty dining Hall, a bar, a TV room, and a large and attractive garden.

For energetic recreation there are facilities for table tennis and croquet at the College, and tennis and squash may be played at the sports ground, which is some distance away. Punts may be hired on the River Cam, about eight minutes walk from the College. There are open air bathing places on the river and an indoor swimming pool in the City.

Cambridge is one of England's most beautiful University cities. It is built on the river Cam, 60 miles north of London and it can be reached either by train (frequent services) in just over an hour, or by an hourly coach service. There is a direct coach from London (Heathrow) Airport to Cambridge twice daily.

Places of interest nearby include Ely Cathedral, with its famous lantern, and the National Stud at Newmarket. Cambridge itself abounds with art treasures and buildings dating back as far as the twelfth century. It has a good shopping centre and many restaurants and pubs, all within easy walking distance of Selwyn College.

Wives and families will find plenty to do outside the Conference Hall, and packed lunches can be ordered in advance for those wishing to make day trips to the Norfolk coast, London, etc. Information will be readily available at the Conference Office and there is a good tourist centre in the City.



The Conference programme is being left fluid in order to take advantage of topical areas of interest which may arise in the next eighteen months.

In accordance with the wishes expressed at the General Meeting in Holland, more time will be set aside in which to discuss matters of special interest to members.

We shall hope to strike a balance in the timetable between requested papers and fruitful internal debate, plus free time to enjoy the delights which Cambridge has to offer.

Sleeping accommodation is in single rooms. Half of them will be in Cripps Court, which consists of pairs of comfortable study bedrooms connected by a shower which can be entered only from either room. The other half will be in the older part of the College surrounding the quad. The rooms here are in "sets" i.e. a small private sitting room and bedroom ensuite. In this part of the College there is a bathroom to every seven "sets". There are adequate toilet facilities in both types of accommodation.



There are two coin operated launderettes and several public telephones within the College.

Cars may be parked in the road by Cripps Court, or in a secure College car park, for which an extra charge will be made.

Meals - all waitress served - will consist of a full English breakfast, three course lunch and dinner, with coffee, plus morning coffee and afternoon tea.

A banquet on the last night will be included in the cost.



It is not possible to give an exact price at this stage as the college will not be fixing the prices for 1984 until September 1983.

As a guide, however, we expect the inclusive cost for accommodation and food from dinner on the 4th to breakfast on the 11th August, including the Banquet and the Conference Fee, to be less than £200 per person. The rooms in Cripps Court will cost a little more, but, hopefully, will also be under £200.

It is realised that this is considerably more than the cost of the 1982 conference in Holland, but it should be more than offset by the convenience of the location, the traditional English food and the rather more comfortable accommodation.

A further notice, with firm prices, information regarding day/weekend visitors, and an application form, will be sent out with the November/December 1983 issue of Land & Liberty, since this is our cheapest form of bulk posting.

However, the prices will probably be available from this office some time before that, and those members wishing to have the earliest possible notification (airmail for overseas) are invited to fill in and return the form below.

* * * * *

To: The Secretary,
International Union for Land Value Taxation and Free Trade
177 Vauxhall Bridge Road, London, SW1V 1EU, England.

I/We are interested in attending the Cambridge Conference in 1984 and would like to receive further details as soon as they are available.

I/We intend to be resident/non-resident at the College.

NAME: _____

ADDRESS: _____

DATE: _____

N.B. *If you do not wish to spoil this brochure, you may send the details on a plain sheet.*

.....

Readers of Land & Liberty who are not members of the International Union, are invited to apply for details of membership to the Secretary at the address shown above.