

The NEW LEAF

"EQUAL OPPORTUNITY FOR ALL



SPECIAL PRIVILEGE FOR NONE"

Volume 3, No. 7

Published by Land Equality And Freedom

February - March 1978

Tax Initiative Campaign Launched In California

ATTORNEY GENERAL CITES \$500,000,000 ANNUAL SAVINGS IN ADMINISTRATIVE COST ALONE

LEAF National, San Diego. A statewide initiative has begun to place before the voters of California a proposal to abolish personal and improvement property taxes. This measure is similar to Senator Rodda's proposal bottled up in the the Finance Committee for the past 18 months. If adopted it would shift all burden from personal property and improvements onto land over a 5 year period.

State Attorney General Evelle Younger, who prepared the official summary for the measure, and who is also the front running candidate for the Republican Gubernatorial nomination in June cites no financial impact on local governments. An annual savings to the State of \$500,000,000 is estimated in 1983 when personal property would become fully exempt.

**Sacramento LEAF
Sacramento LEAF Chapter
Spearheads Drive**

LEAF Chairman Morrow said, "This measure is ideally timed. The Sacramento Chapter which has initiated and organized this effort has presented the most reasonable alternative to the highly controversial and potentially disruptive Jarvis-Gann initiative. The Jarvis proposal is already before the voters for this June 1978 election and would reduce ALL property tax to 1%, thus either crippling local governments or forcing them to the regressive sales and income taxes."

The first phase of the

campaigning is already underway with a massive signature gathering campaign in the City of Sacramento.

Copies of the initiative petitions and more information may be obtained from LEAF National Headquarters or by writing Charles Tulley, Sacramento LEAF Branch President, 1925 Kincaid Way, Sacramento, CA 95825.

ASSESSOR PRACTICES INVESTIGATED

LEAF and Basic Economic Education Inc. (BEE) were instrumental in triggering a recent investigation of the assessment practices of San Diego County Assessor E. C. Williams.

BEE in a 1976 study compared the assessments and sales of more than 50,000 transactions during that year. It measured the ratio of assessed market value (the assessed value multiplied by four) to sale price.

The study revealed that homes and residences were assessed at very close to

their sale price. But commercial and vacant properties were frequently undervalued by anywhere from a third the sale price to more than half. In almost every transaction involving a non-residential property, the study revealed a discrepancy of more than 25% between the sale price and the assessor's estimate of the market value.

The net effect of this situation is to place the major burden for property taxes on homeowners while large landowners, developers, holders of commercial property get a break.

The study triggered an investigation by the **San Diego Newsline**, an independent paper in San Diego, and further revealed that several of the major beneficiaries of these discriminatory practices include major contributors to Assessor Williams' bid for reelection in 1970, many of whom are major landowners or head corporations with large local holdings.

of all kinds might have merit. Neither of these propositions do this.

Jarvis and Behr are not tax relief measures. They are tax shift measures. Both Jarvis (Prop. 13) and Behr (Prop. 8) shift the burden of taxation from the propertied few onto the many working and business people. If you work you should vote NO on both. If you produce, you should vote NO. If you provide goods and services you should vote NO. If you must spend most of your money as a consumer on simply living, you

(Continued on back page)

Tax Relief For Who?

California voters must decide on June 6th between two "Property Tax Relief" propositions — Jarvis-Gann (Prop. 13) or Behr (Prop. 8). It's a heads they win, tails you lose choice. Behr is touted as the reasonable alternative to Jarvis. It's not. Behr just isn't quite as bad as Jarvis.

The taxpayer who controls large parcels of land, minerals, timber, oil, or vacant commercial and industrial property will love BOTH the Jarvis and Behr measures. The owner of \$10,000,000 worth of such land will save approximately \$135,350 each year if Jarvis passes. The savings under the Behr measure will be \$79,050 each year. In either event all it means is that sales, business inventory and especially income taxes will increase. Workers and business people will pay more taxes — they'll pay the large land holders share. Being relieved of \$600 in taxes on your home is no relief at

all when you have to pay an extra \$800 in income and sales taxes. Let's face it, taxing something discourages it. If we raise sales and income taxes any more, people are going to stop working. That is the real disaster we face if either Proposition 13 or 8 passes.

The argument that these measures will force elimination of unnecessary government spending does not hold up. The governments with the largest budgets and most criticized for waste don't collect property taxes at all — state and federal. Most cities are now down to about 20% of their revenue coming from property tax. School districts which are most dependent on property taxes still only collect about half of their money from property taxes and are least criticized for wasted spending.

A tax measure that simply mandated a limit on government spending or an absolute limit on taxation

"For This Land Is Mine" Acclaimed

BEST ECONOMICS FILM IN DECADE

"For This Land Is Mine" is being considered for a documentary film award. Producer and Director Charles Ashira announced that now that the film is being distributed, it can be formally entered for judging. Many are acclaiming it the best economics film in a decade.

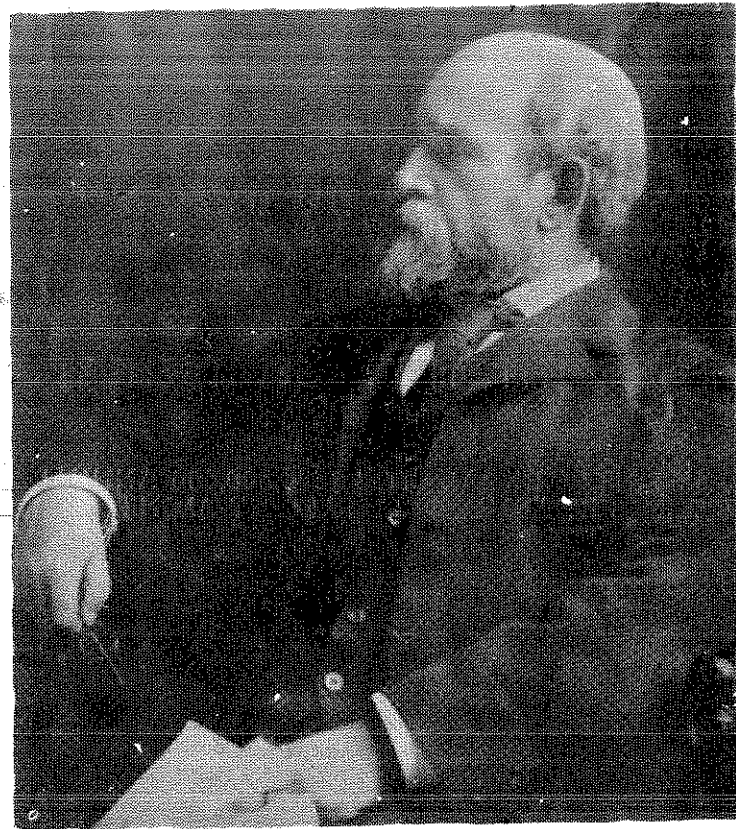
Prints are now available of the new LEAF film, "For This Land Is Mine". They can be ordered through the LEAF National Headquarters, 2242 Morley Street, San Diego, CA 92111, at \$250 each.

The film is being promoted by LEAF in order to educate and make more people aware of Land Value Taxation and the Henry George philosophy.

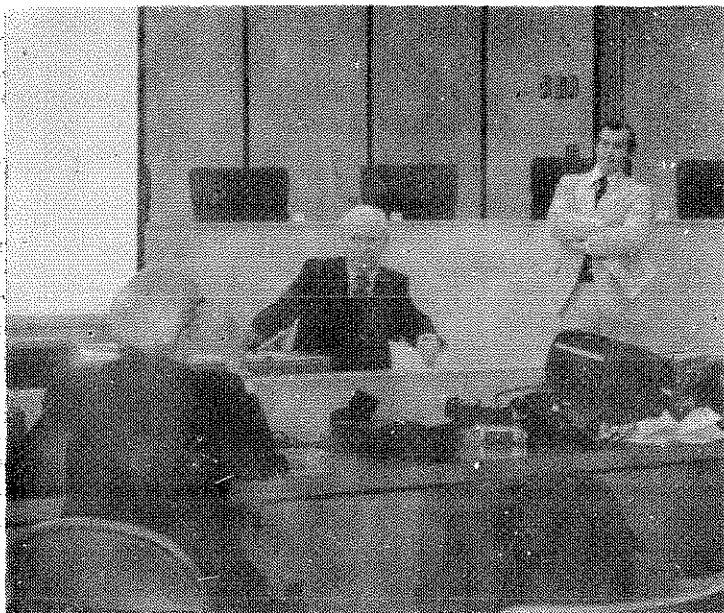
The 26-minute documentary is narrated by William Prince who starred in the Academy Award winning film "Network."

"For This Land Is Mine" was recently viewed by members of the California legislature. It was shown at the Sacramento State Capitol Building at the invitation of Assemblyman Willie Brown and State Senator Albert Rodda.

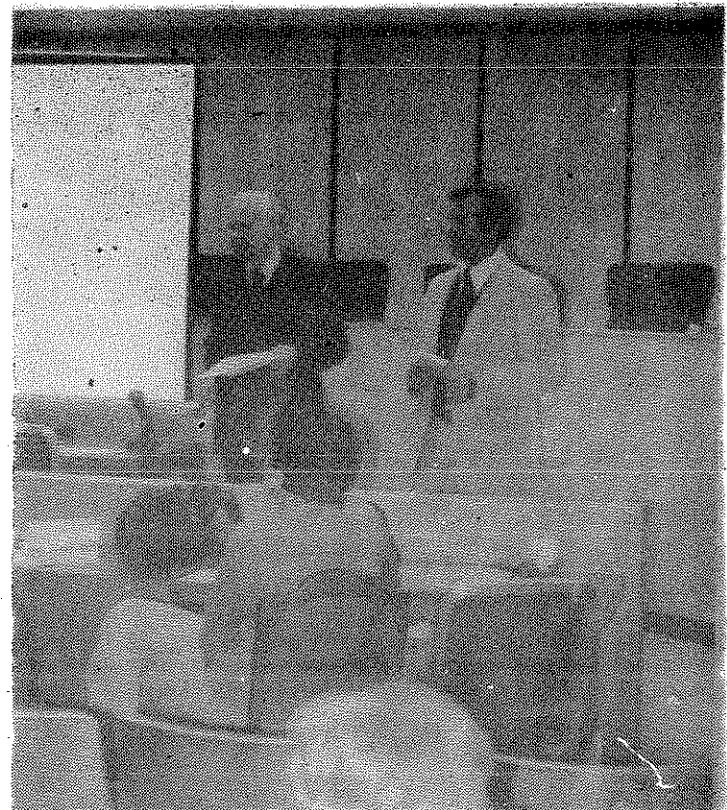
A full presentation by LEAF members was given on March 3rd to the San Francisco City Council / Board of Supervisors. Board Chairman Floyd Morrow, LEAF President William Filante, Executive Director Terry Newland and LEAFers Dr. William Trueheart, Robert Tideman and Jack Morrison were on hand to show the film and give testimony.



Henry George, above, and his teachings are focused on in the new LEAF film, "For This Land Is Mine". LEAF is also working on a full length two hour film on George's life.



California State Senator Albert Rodda, left, and Floyd Morrow, LEAF Board Chairman, right, answer questions from the media after a film showing and program in Sacramento.



Senator Rodda answers questions from the media regarding the new statewide initiative which abolishes personal and improvement property taxes. (See story on front page.)

Notable News

INCENTIVES . . . According to Parade News Supplement (2/12/78), Ireland is the latest tax haven for foreign corporations and hundreds of talented writers and artists. How and why does Ireland attract? Simply by not penalizing them by taxation!

CHICAGO (UPI) — February 1978 . . . State tax collections from income taxation exceeded \$101 billion. However, more states (24) still relied more heavily on a general sales tax. Only one state (Alaska) relied on property taxes for the largest share of its revenue. One state's (Louisiana) primary source of revenue was a severance tax on minerals. Finally, one state (New Hampshire) reached the height of "sock-it-to" transportation mentality by relying most heavily on motor fuel levels.

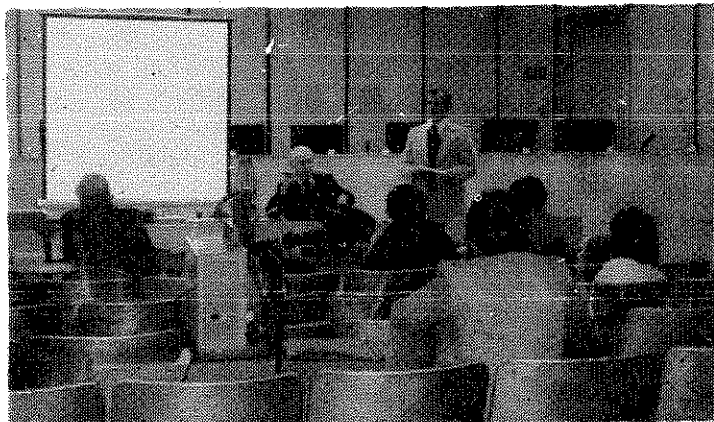
SAN DIEGO (2/14/88) . . . Over 9 million U.S. income tax returns were prepared by H & R Block in 1977. Their sales were in excess of \$146 million. (Ed.'s note. Wouldn't it be nice to have fewer and less complicated taxes, preferably only one?)

CHICAGO DAILY NEWS — February 1978 — Tax Dodgers Find Ranks Growing . . . According to Peter Gutmann, head of Economics and Finance Department at Baruch College of the City University of New York, more than 195 billion dollars of unreported economic activity was transacted in the U.S. in 1977. In an article in Financial Analysts Journal, Gutmann wrote that the subterranean economy accounts for more than 8 million jobs in this country.

(Seen any good news items lately, send them to National Headquarters).



San Francisco Area LEAFers at a recent gathering.



Floyd Morrow speaks before legislators and the media at a recent hearing in Sacramento. The new film, "For This Land Is Mine," was also shown.



Allana Hartzok, front, a San Francisco LEAFer, and an unidentified legislative aid, listen to the special presentation before Sacramento legislators.

New Offices For Nat'l Headquarters

National Headquarters for LEAF opened in its new location during January. The offices were relocated to 2242 Morley Street, San Diego, CA 92111, telephone (714) 279-6080.

The attractive and comfortable Morley Street building is owned by Basic Economic Education which is donating the space to LEAF.

"The relocation enables us to expand services to our national members," said Board Chairman Floyd Morrow. "We're organizing a library and reading room and hope to include a list of available publications in one of our next newsletters. The coffee pot is always on. We would be delighted to have visitors," Morrow added.

Mail and phone calls may still be received at the former location on Mission Valley Center West.

How Can YOU Help LEAF?

Here are a few simple things you can do to help LEAF:

1. Recruit one new member in your Branch.
2. Contact the Director in your area about helping to form a new Branch in your city.
3. Become an active member in your Branch. Back up the efforts of your Branch president. Establish regular meeting dates; at least monthly.
4. Bring in speakers. Report to your members about matters affecting property taxation.
5. Spread the word to all those concerned about LAND, EQUALITY, AND FREEDOM.

Notices

LEAF welcomes its newest members into the organization: Wendy Rockwell and Rueben Rockwell from Fairhope, Alabama; Albert Bennett, Summit, New Jersey; S. M. Lohne, Sylvia Johnson, and Leatha Baxter from San Diego, California; and Dominic Barile, Tertius Chandler and Lois Williams from the San Francisco area.

* * *

We suggest that LEAF members send letters and post cards to the U.S. Postal Service, 475 L'Enfant Plaza West, SW, Washington, D.C. 20260, supporting and proposing a commemorative Henry George stamp for next year.

* * *

It's not too early for various Henry George groups to start organizing a celebration of the 100th anniversary of "Progress and Poverty." A convention fund is the first priority! LEAF would like to suggest that anyone wishing to contribute toward such a project may do so by sending contributions to LEAF. Such funds will be held in trust for the celebration (Make checks payable to LEAF, 1979 Progress and Poverty Anniversary Trust Fund).

* * *

Edith Capon, a LEAF member from Auburndale, Massachusetts, suggests that LEAFers and Georg-

ists approach local libraries in their areas about setting up a Henry George exhibit. Material for exhibition could include: first editions of Progress and Poverty, photos of George's birthplace, his family and of Agnes de Mille, photos of George during his career, a brief biography and statement of his basic principles, and a sample real estate tax bill that shows how the tax burden is placed on improvements.

* * *

Plans are underway to start a magazine-newspaper syndicate which hopes to build a readership of 30 million. President William Newcomb and others have chartered an organization called "Media Foundation for Land Economics, Inc." The Foundation decided to do something about the most common complaint among Georgists: "Nobody knows why we accept an economist's thesis whose works were written in the 19th century. Nobody publicizes us..." The Foundation wants to publicize the Georgist movement through a large newspaper readership which would deliver national sustained substantive information to the public. Media Foundation is soliciting contributions and is actively seeking grants from Georgist organizations. For more information, write: Media

TAX RELIEF FOR WHO?

(Continued from front page) should vote NO on both measures.

Only if you have a comfortable nontaxable income and significant real estate holdings might the passage of either Proposition 13 or 8 be of benefit to your personally. There is no way their passage can be of benefit to California.

Foundation, 532 Wickham Road, Melbourne, Fla. 32901.

* * *

We would like to print newsworthy events and activities of each of our LEAF branches and hope you will send material to Editor, The New Leaf, 2242 Morley Street, San Diego, CA 92111. LEAF members are also encouraged to submit articles for publication.

Editor's Corner

A time and place . . . in order to pursue a war, one must build an army . . . in order to win a war, one must have many educated, dedicated, and disciplined soldiers . . . in order to attract recruits to such an army, it is necessary to have enlightened and strong leadership, but MOST of all, there must be a CAUSE worth fighting for . . . "Justice is the object, taxation the means." Henry George. (If each member recruits one other member, we've doubled our army.)

How To Join . . .

It's simple, just check the membership level you desire and fill in the form below. Send it to LEAF's national headquarters or turn it into your local branch.

Membership Form

You can count on me as a LEAF member at the level checked below:

- | | |
|--|---|
| <input type="checkbox"/> Regular \$15 Yearly | <input type="checkbox"/> Friend of LEAF |
| <input type="checkbox"/> Sustaining (\$5 mo.) | <input type="checkbox"/> Contribution \$_____ |
| <input type="checkbox"/> \$60 Yearly | <input type="checkbox"/> Check Enclosed |
| <input type="checkbox"/> Contributing (\$10 mo.) | <input type="checkbox"/> Bill Me |
| <input type="checkbox"/> \$120 Yearly | |

Name: _____ Branch: _____

Address: _____

City: _____ State: _____ Zip: _____

THE NEW LEAF NATIONAL OFFICES

454 Mission Valley Center West
San Diego, California 92108
(714) 297-4994

TERRY NEWLAND, Exec. Dir.
3098 California St., Rm. 26
San Francisco, Calif. 94115
(415) 567-0885

National Directors and Officers.

Floyd L. Morrow, Dir., Bd. Chmn.
Dr. William Filante, Dir., Pres.
Dr. Steven Cord, Dir., Vice-Pres.
Dr. Arthur Becker, Director
Robert Clancy, Director
Dr. Mason Gaffney, Director
Harry Pollard, Director
Everett Seeley, Director
Robert Tideman, Director
Nicholas Lenten, Sec.-Treas.



LEAF

Land Equality And Freedom
NATIONAL HEADQUARTERS
454 MISSION VALLEY CENTER WEST
SAN DIEGO, CALIFORNIA 92108

Bulk Rate
U.S. Postage
PAID
Permit No. 618
San Diego, CA

Robert Clancy
Henry George Institute
55 W. 42nd, Rm 462-A
New York, NY 10036

ADDRESS CORRECTION REQUESTED