

September 1, 1982

Mr. George L. Collins, Director  
Henry George School of Social Science  
413 South Tenth Street  
Philadelphia, PA

Dear George:

Great News! Our application for the National Register of Historic Places has passed the review of the Bureau for Historic Preservation. From the evidence submitted the Henry George Birthplace meets the National Register criteria and it has been assigned a nomination priority by the Historic Preservation Board.

The next step in the registration process is the completion of a National Register Nomination Form which will be reviewed by the State Historic Preservation Board. These nominations are used as archival sources for research and our set of H.A.B.S. drawings and accompanying research data put our form in very good standing. Our Nomination Form will be assigned a review date by the State Historic Preservation Board sometime within the next two months. Upon passing their review the Birthplace will be placed on the National Register of Historic Places.

I would very much like to meet with you and Mr. Peterson in the near future but Mr. Peterson's schedule is almost totally devoted to the Robert Smith Celebration and researching his book on Smith coupled with the 50th Anniversary of the Historic American Building Survey. I would keep after him and try to arrange a meeting at the Birthplace.

I am sure you're curious about the number of hours I've spent on the project since Feb. 23, 1982. Rather than list a page long tally of numbers I'll summarize.

TIME SPENT ON DRAWINGS:

Sheet No. 8 required 35 hours

2 review sessions with Mr. Peterson and resulting revisions totaled 15 hours

TOTAL 50 hours

TIME SPENT ON SUBMISSIONS to Pennsylvania Historical and Museum Commission and National Register of Historic Places Inventory Forms:

Pennsylvania Historical and Musuem Commission Resource  
Form involved 3 Rough Drafts and 3 Meetings with Peterson

National Register of Historic Places Inventory Form  
involved write-up and review with State Staff

Research time and cost for reductions of H.A.B.S.  
Set to 8½" x 11" format  
TOTAL 78 hours

GRAND TOTAL 128 HOURS

I will inform you of the National Register Form's progress  
as things develop.

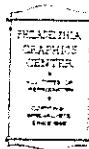
Sincerely,



James S. Collins

Enclosures

cc: Peterson



# Philadelphia Graphics Center

COMPLETE REPRODUCTION SERVICES  
CAMERA NEGATIVES COPYING DUPLICATING  
OFFSET PRINTING WASH-OFF MYLAR WHITE PRINTS

64089

1311 SANSON STREET  
PHILADELPHIA, PA. 19107

FOR MESSENGER SERVICE

PHONE: Kingsley 6-3454  
Kingsley 6-6376

Date 4/10/82 Job No. \_\_\_\_\_

KINDLY MAKE UP ORDER IN TRIPLICATE AND SEND  
WHITE AND PINK COPIES TO P.G.C.

NUMBER OF ORIGINALS	NUMBER OF PRINTS EACH	SIZE	KIND OF PRINTS
9	1	19" X 25"	REDUCTIONS
		X	
		X	
		X	
		X	
		X	
		X	
		X	
		X	TOTAL PRINTS _____

USE THIS SPACE FOR SPECIAL REMARKS ONLY

*Paul W. [Signature]*  
27  
6  
162  
②

DO NOT USE THIS SPACE - ACCOUNTING		
TOTAL	PRICE	
Sq. Ft. Blue		
Sq. Ft. White		
Sq. Ft.	27	00
total	162	
	2862	

CHARGE TO \_\_\_\_\_

ADDRESS \_\_\_\_\_

ORDERED BY \_\_\_\_\_

DO NOT WRITE BELOW THIS LINE

## Distributors:

Kroy Machines & Supplies  
Geotype Press-On Lettering

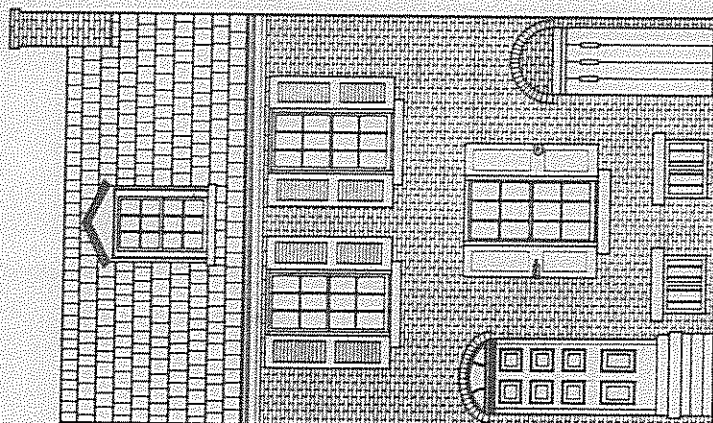
formerly

**BRUNING**

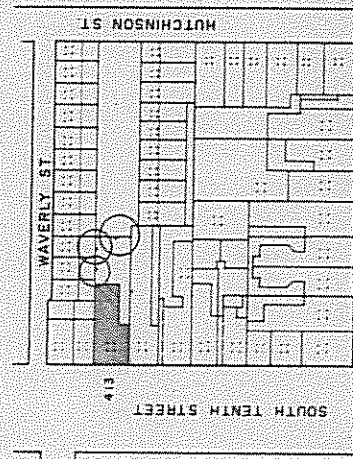
WHEN CARPENTER EDWARD HARLIN (THE OWNER) DIED IN 1820, THE SITE WAS OCCUPIED BY A ONE- AND-A-HALF STORY FRAME HOUSE. IT SEEMS TO HAVE BEEN SUCCEEDED BY THE PRESENT BRICK HOUSE IN THE FOLLOWING YEAR

TITLE THEN WENT TO GEORGE SMITH, A LEADING PHILADELPHIA TYPEFOUNDER, LANDLORD TO THE GEORGE FAMILY. HERE HENRY GEORGE ((AUTHOR OF PROGRESS AND POVERTY, FATHER OF THE SINGLE TAX MOVEMENT AND POLITICAL ACTIVIST) WAS BORN IN 1839. FROM 1898 TO 1926 WHEN THE HOUSE WAS OWNED BY S.K. MORTON, THE MANSARD ROOF, BAY WINDOW AND OTHER DRASTIC CHANGES WERE ADDED TO ITS FRONT. SINCE THEN THE HENRY GEORGE FOUNDATION OF AMERICA AND THE HENRY GEORGE SCHOOL OF SOCIAL SCIENCE HAVE PRESERVED THE HOUSE AND USED IT.

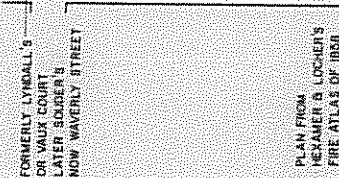
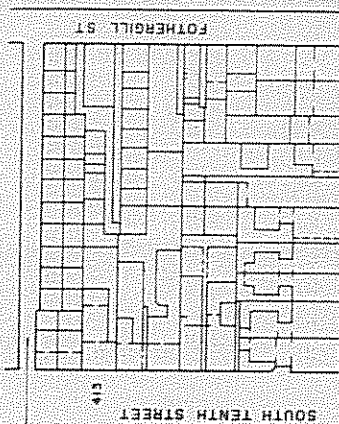
A REGISTERED PHILADELPHIA LANDMARK FROM 1947, THE STRUCTURE WAS STUDIED AND RECORDED IN 1980-81 BY CHARLES E. PETERSON FA.I.A. AND JAMES S. COLLINS AS COMMISSIONED BY THE FOUNDATION.



FRONT ELEVATION  
(A CONJECTURAL RESTORATION) PERIOD OF 1839



1981 PLAN BASED ON  
INSURANCE MAP  
OF PHILADELPHIA  
SANBORN MAP CO.  
1918 REVISED

PLAN FROM  
HEXAMER & LOCHER'S  
FIRE AYI AS OF 1958

LOMBARD STREET

LOMBARD STREET



NEIGHBORHOOD PLAN IN 1981

NEIGHBORHOOD PLAN IN 1858

2000

JAMES S. COLLINS, 1981

OFFICE OF ARCHITECTURE AND HISTORIC PRESERVATION  
HISTORIC CONSERVATION AND RESTORATION SERVICES  
UNITED STATES DEPARTMENT OF THE INTERIOR

REFERENCE NORTH

THE HENRY GEORGE BIRTHPLACE

412 SOUTH TENTH STREET

PHILADELPHIA COUNTY

PHILADELPHIA, PENNSYLVANIA

HISTORIC AMERICAN  
BUILDINGS SURVEY  
SHEET 1 OF 9 SHEETS

13'-1 1/8" 8'-11 1/2" 0'-2"

GHOST OF ORIGINAL  
BACK ENTRY

ORIGINAL OPENING  
FOR DOOR

CONCRETE FLOOR

WINDOW INFILLED

RUBBLE FOOTING

WOODEN STEPS

BRICK PLATFORM

PARTY WALL OF  
411 S. 10TH ST.

CONCRETE FLOOR

ARCH

INFILLED

ARCH

RUBBLE WALL  
WITH AREAS OF  
BRICK INFILL

JOINT

4'-0"

10'-9"

CELLAR FLOOR PLAN

1/4" = 1'-0"

METERS 1:48



REFERENCE NORTH

OUTLINE OF EXTERIOR WALL  
IN BREEZEWAY ABOVE.  
SEE SECTION SHEETS  
NO. 5 & NO. 8

BARREL VAULT OVER

PARTY WALL  
SHARED WITH  
415 S. 10TH ST.

JOINT

6'-10"

10'-9"

CELLAR CEILING PLAN

1/4" = 1'-0"

METERS 1:48



REFERENCE NORTH

PLASTER & LATH  
CONCEALS  
FRAMING

UP

3x9

4x9

ADDED LATER

4x9

3x9

4x4 BEAM

3x9

4x9

3x9

4x9

3x9

4x9

3x9

OLD HEARTH REMOVED,  
FRAME FILLED IN

IMPORTANT NOTE:  
FLOOR FRAMING MAY  
BELONG TO EARLIER  
FRAME HOUSE ON SITE.

DRAWN BY: JAMES S. COLLINS, 1981

OFFICE OF ARCHITECTURAL AND HISTORIC PRESERVATION  
UNIVERSITY CITY OF PHILADELPHIA  
UNIVERSITY CITY OF PHILADELPHIA

NAME AND LOCATION OF STRUCTURE

THE HENRY GEORGE BIRTHPLACE

413 SOUTH TENTH STREET

PHILADELPHIA COUNTY

PHILADELPHIA, PENNSYLVANIA

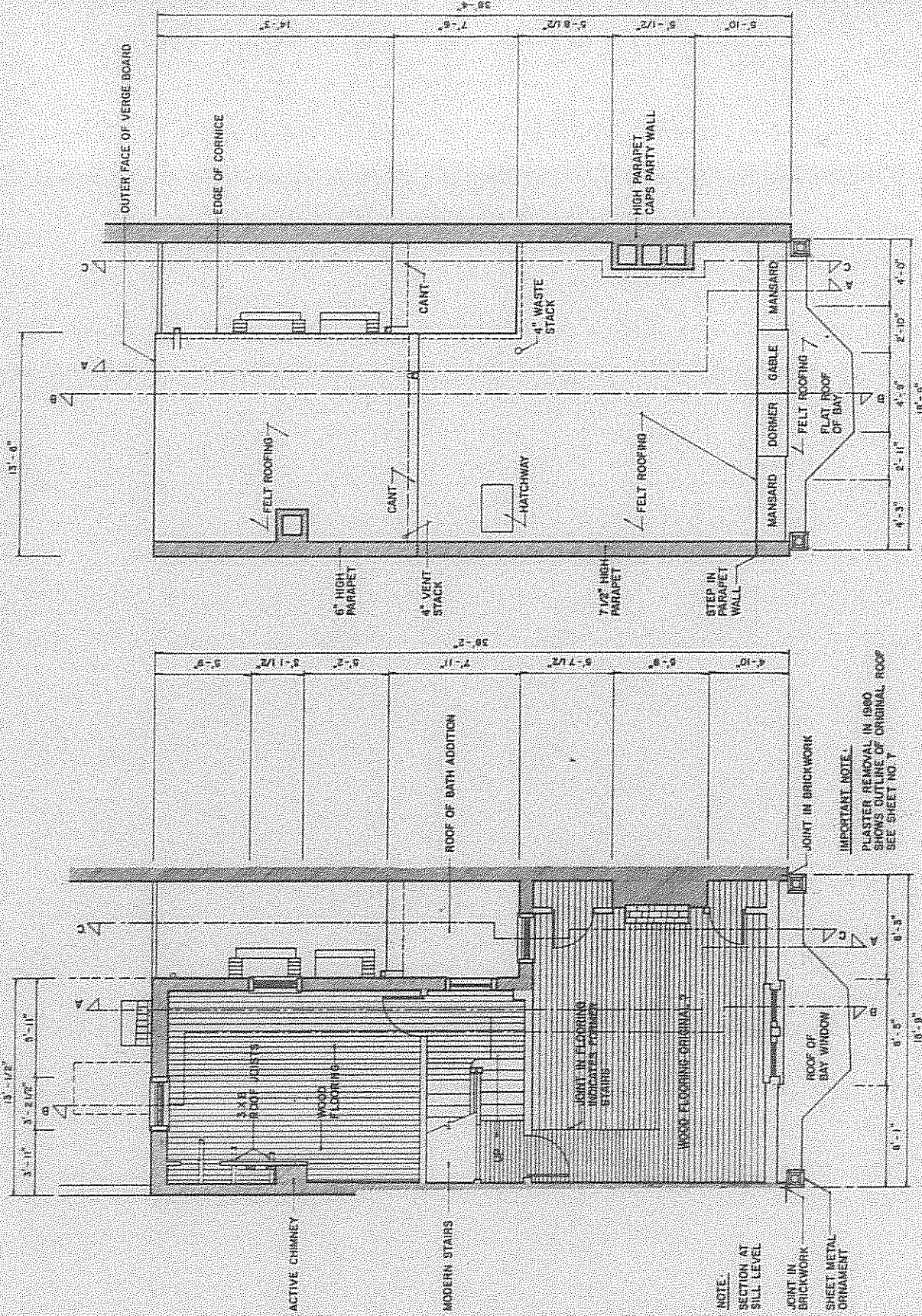
SURVEY NO.

HISTORIC AMERICAN  
BUILDINGS SURVEY

SHEET 2 OF 9 SHEETS







DRAWN BY JAMES S. COLLINS, 1961

OFFICE OF ARCHITECTURE AND HISTORIC PRESERVATION  
HISTORIC CONSERVATION AND RECONSTRUCTION  
UNITED STATES DEPARTMENT OF THE INTERIOR

413 SOUTH TENTH STREET

THE HENRY GEORGE BIRTHPLACE

PHILADELPHIA, PENNSYLVANIA

PHILADELPHIA, PENNSYLVANIA

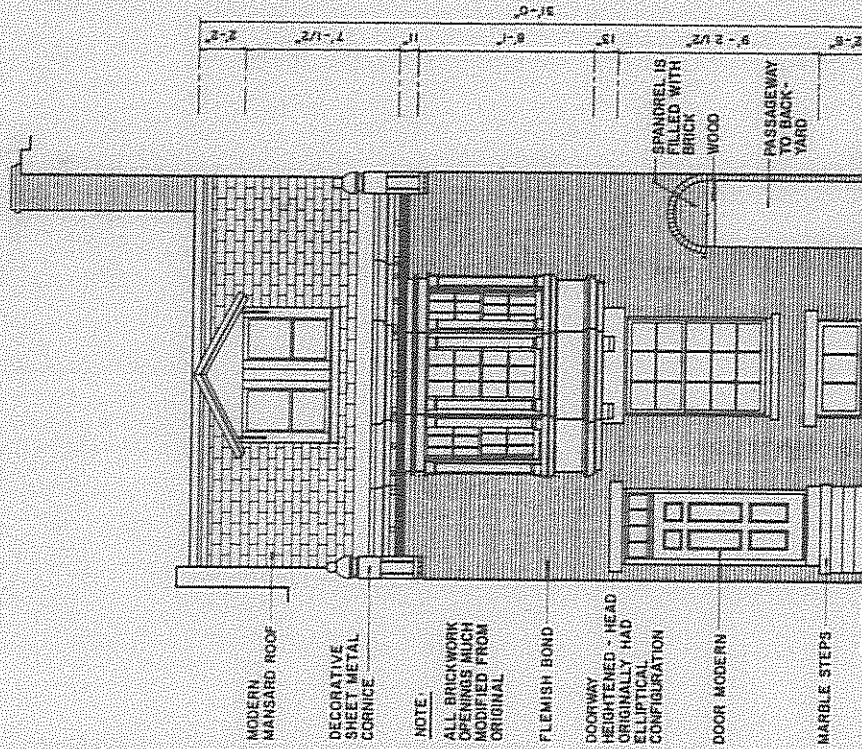
HISTORIC AMERICAN  
BUILDINGS SURVEY  
SHEET 4 OF 9 SHEET

PROJECT NO.

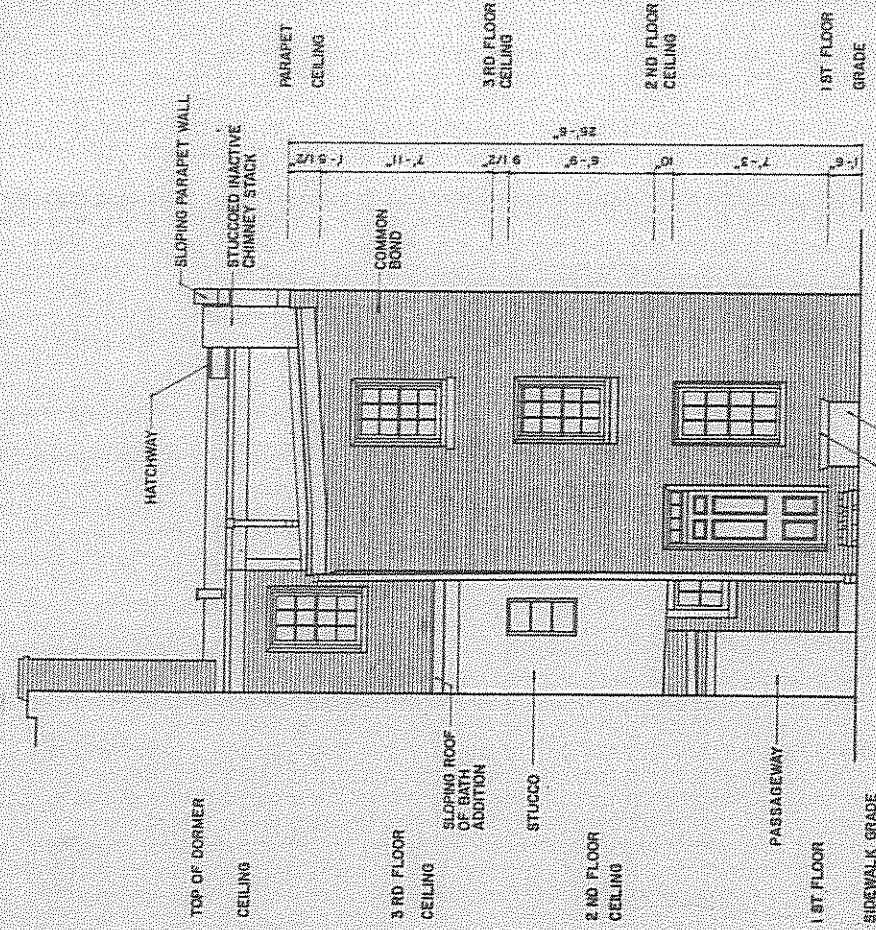
SURVEY NO.

DATE AND LOCATION OF STRUCTURE





FRONT ELEVATION



BACK ELEVATION

DESIGNED BY JAMES S. COLLINS, 1981

OFFICE OF ARCHITECTURE AND HISTORIC PRESERVATION  
HERITAGE CHARACTERIZATION AND RECONSTRUCTION SERVICE  
UNIVERSITY CITY DEPARTMENT OF THE CITY

413 SOUTH TENTH STREET

THE HENRY GEORGE BIRTHPLACE

PHILADELPHIA COUNTY

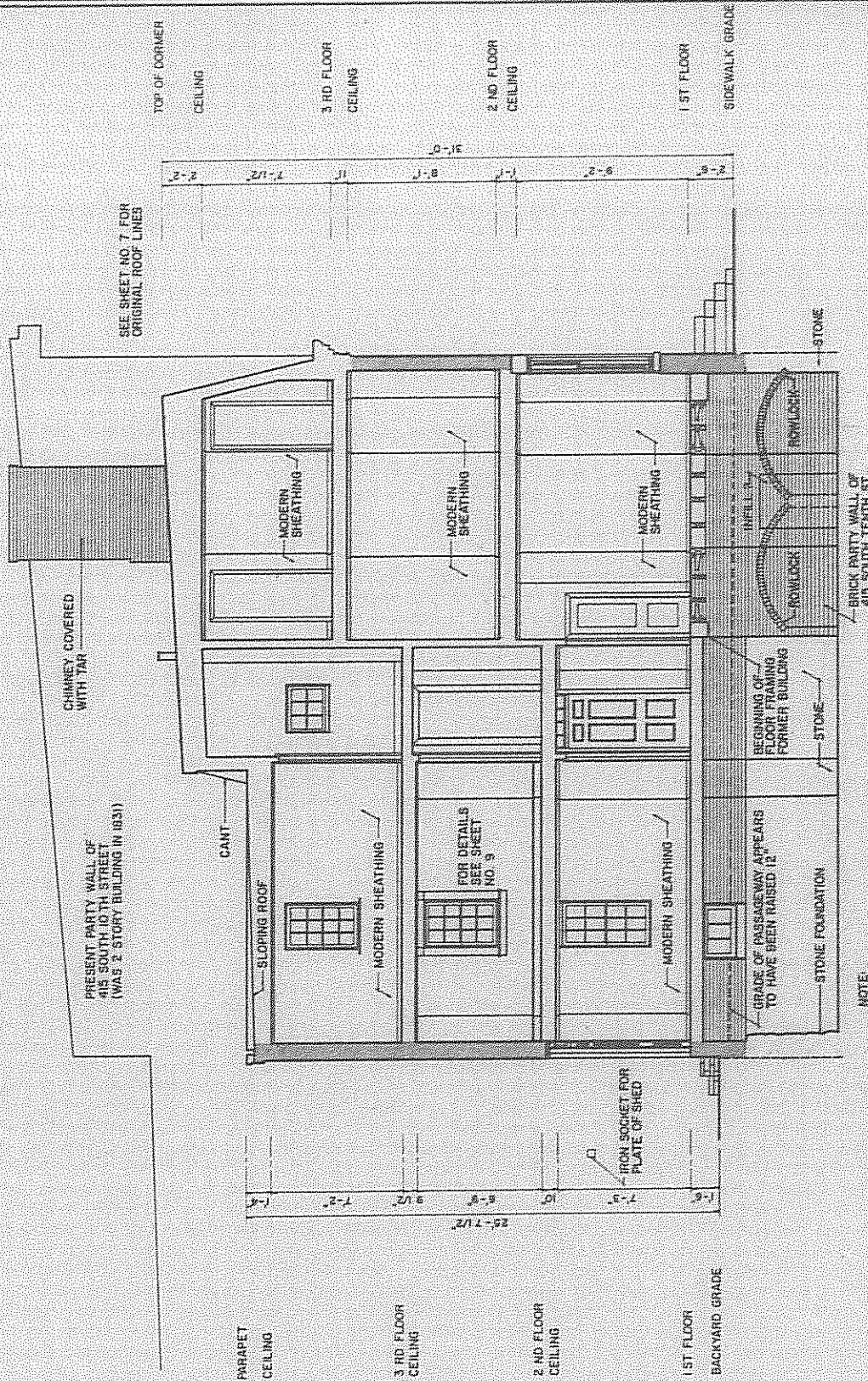
PHILADELPHIA, PENNSYLVANIA

SURVEY NO.

HISTORIC AMERICAN  
BUILDINGS SURVEY  
SHEET 5 OF 9 DETAILS

DATE OF SURVEY





SECTION - SOUTH VIEW A - A

14'-11-0" 0 1 2 3

METERS 1:48

NOTE:  
CEILING FRAME UNEXPLORED DUE  
TO PLASTER IN REAR OF CELLAR

DRAWN BY JAMES S. COLLINS, 1981

OFFICE OF ARCHITECTURAL AND HISTORICAL RESEARCH  
UNIVERSITY CITY OF PHILADELPHIA  
UNIVERSITY CITY OF PHILADELPHIA

THE HENRY GEORGE BIRTHPLACE

413 SOUTH TENTH STREET

PHILADELPHIA COUNTY

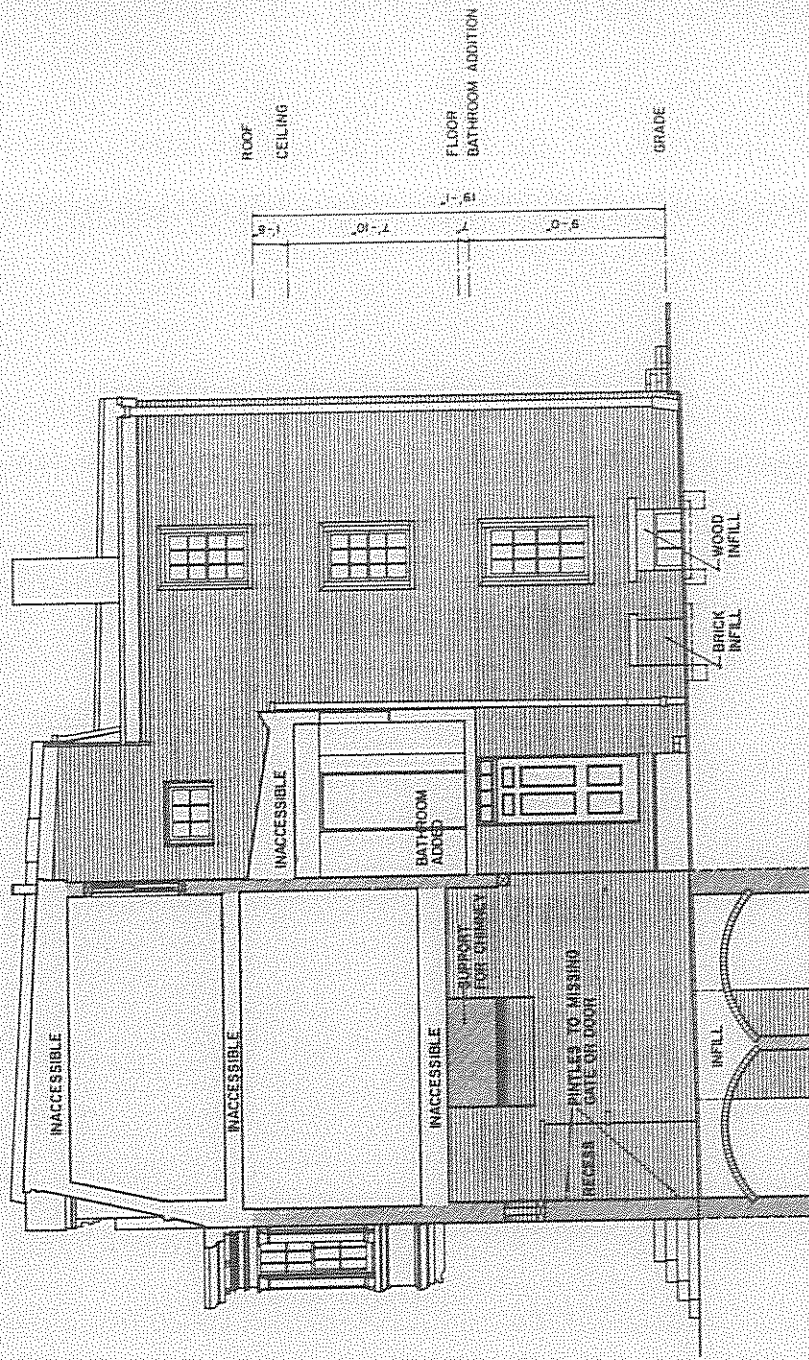
PHILADELPHIA, PENNSYLVANIA

SURVEY NO.

HISTORIC AMERICAN  
BUILDINGS SURVEY  
SHEET 6 OF 9 SHEETS

DATE OF SURVEY





SECTION - NORTH VIEW C - C

1/4" = 1'-0"

METERS 1:40

0 2 4 6 8 10

DRAWN BY JAMES S. COLLINS, 1981

OFFICE OF ARCHITECTURE AND HISTORIC PRESERVATION  
 HISTORIC COMMISSIONER'S OFFICE  
 UNITED STATES DEPARTMENT OF THE INTERIOR

413 SOUTH TENTH STREET

THE HENRY GEORGE BIRTHPLACE

NAME AND LOCATION OF STRUCTURE

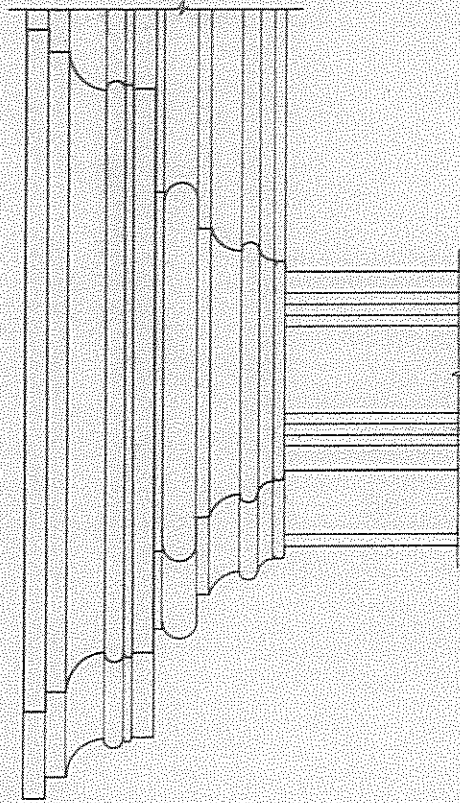
PHILADELPHIA, PENNSYLVANIA

SURVEY NO.

HISTORIC AMERICAN  
 BUILDINGS SURVEY  
 SHEET 8 OF 9 SHEETS

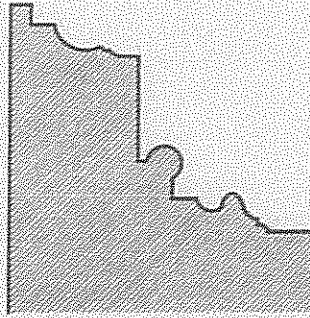
OFFICE OF ARCHITECTURE  
 AND HISTORIC PRESERVATION





BEDROOM MANTEL DETAIL

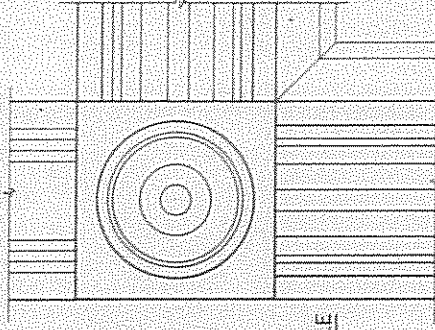
SCALE: ONE HALF FULL SIZE



PROFILE



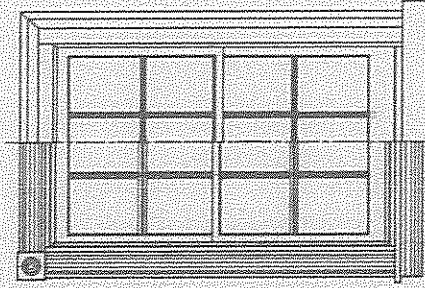
PROFILE



PROFILE

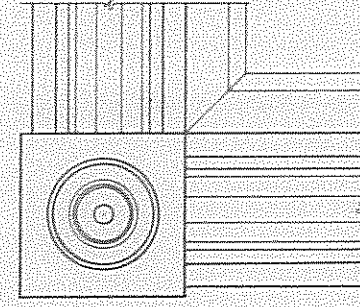
FIREPLACE MOULDING

SCALE: ONE HALF FULL SIZE



BEDROOM WINDOW ELEVATION

SCALE: 1/2" = 1'-0"



WINDOW TRIM DETAIL

SCALE: ONE HALF FULL SIZE



PROFILE



PROFILE

NOTE:  
OLD STYLE WOODWORK IN BEDROOM  
(SECOND STORY REAR) MAY DATE  
FROM RESTORATION BY A. RAYMOND  
RAFF COMPANY UNDER THE DIREC-  
TION OF RICHARD MEGASKEY, A.I.A.  
(20TH CENTURY).

ORIGINAL CEILING  
EXISTING CEILING

DRAWN BY: JAMES S. COLLINS, 1981

OFFICE OF ANTHROPOLOGY AND HISTORIC PRESERVATION  
HERITAGE CONSERVATION AND RESTORATION SECTION  
UNITED STATES DEPARTMENT OF THE INTERIOR

NAME AND LOCATION OF STRUCTURE

THE HENRY GEORGE BIRTHPLACE

413 SOUTH TENTH STREET

PHILADELPHIA COUNTY

PHILADELPHIA, PENNSYLVANIA

SURVEY NO.

HISTORIC AMERICAN  
BUILDINGS SURVEY  
SHEET 9 OF 9 SHEETS

DATE